

# Co-management and Concessions in Namibia

Mechanisms for promoting  
community involvement in tourism

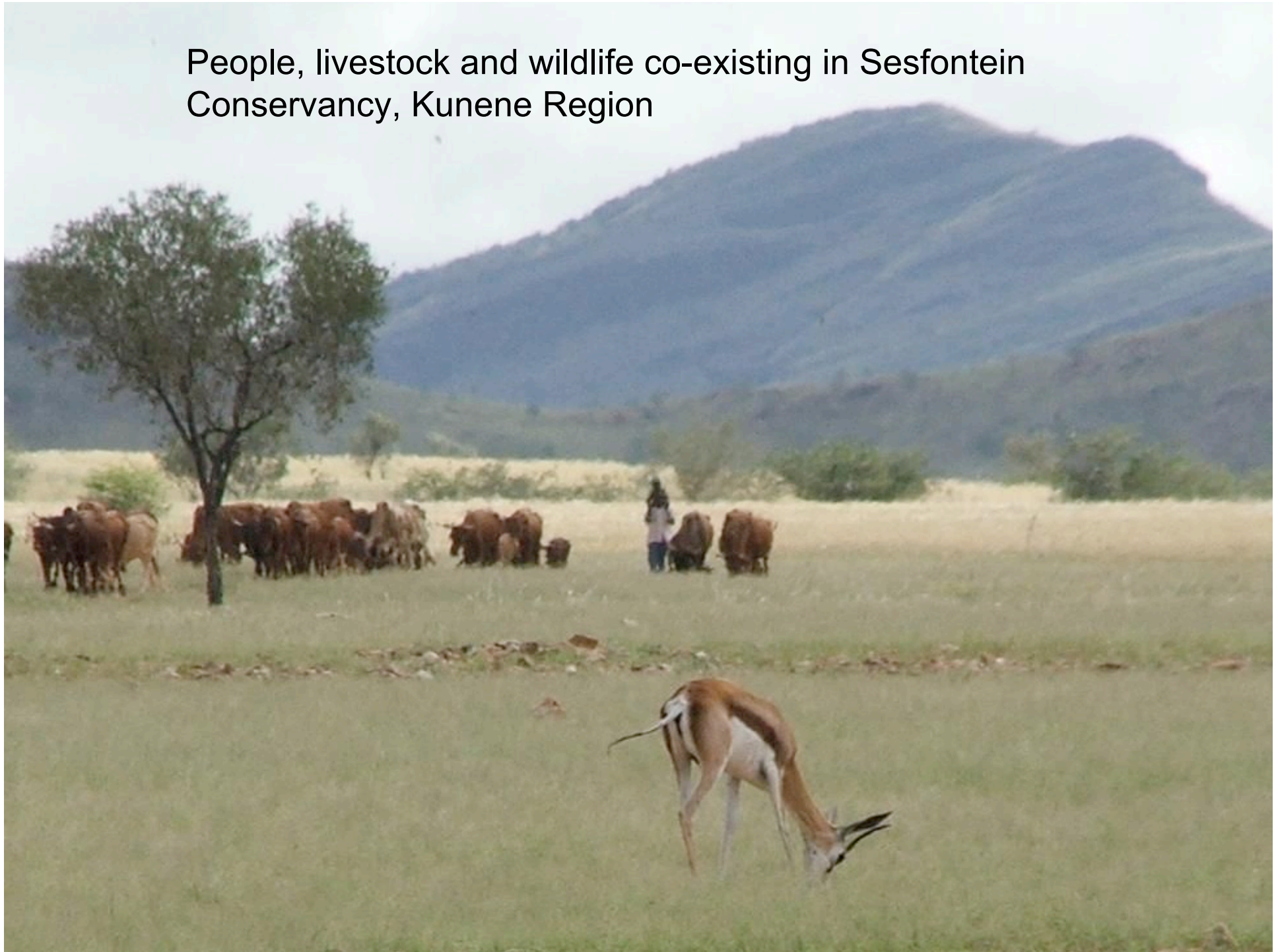
# MET objectives

- MET has 2 sets of overall objectives:
  - 1. Conservation: Biodiversity conservation and maintenance of ecological processes – MET responsible for Namibia's protected areas (PAs) and for conservation of wildlife outside PAs
  - 2. National Development: MET is expected to contribute to National Development goals, particularly poverty reduction & economic growth

# MET Objectives (2)

- Strategies to achieve objectives
  - 1. Outside PAs
    - Promote sustainable use of wildlife through giving use rights to farmers (communal area conservancies).
    - Mechanism = form of co-management
      - Shared decision making with farmers
      - Defined rights, roles and responsibilities
      - Extension and capacity building for conservancies
    - Results: Increased wildlife, increased income

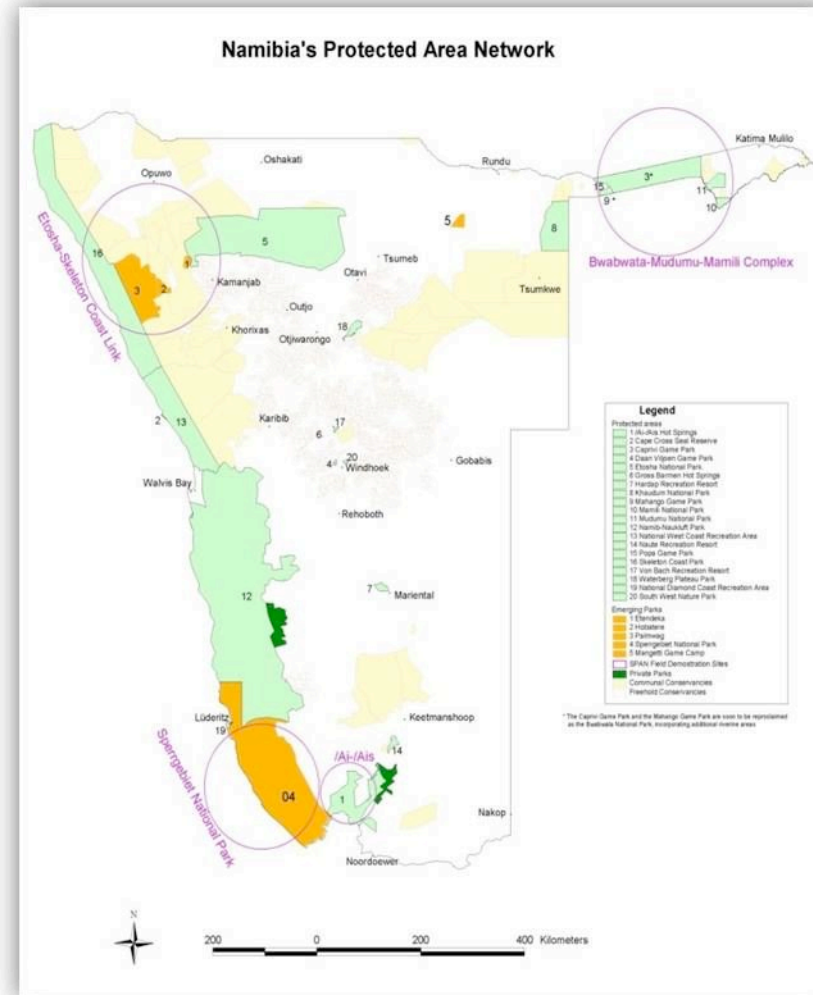
People, livestock and wildlife co-existing in Sesfontein  
Conservancy, Kunene Region



# MET objectives (3)

- Strategies to achieve objectives
  - 2. Protected Areas
    - Integration of PAs with surrounding economies
    - Integration of PA management with management of surrounding landscape
    - Work with people living in parks, removed from parks, and park neighbours

# Namibia's PA Network



# PA CO-MANAGEMENT: POLICY DIRECTIONS

- Emerging policies and legislation promote co-management including:
  - Protected Areas & Resident People
  - Concessions Policy
  - HWC policy
  - Draft Parks & Wildlife Management Bill

# Existing co-management initiatives

- Bwabwata (incl. MNC):
  - Agreement with Resident community;
  - cooperation across larger landscape
- Mangetti:
  - TA, Regional Council, Land Board
  - contractual park
- Greater Fish River:
  - private sector, communities, Regional Council
  - Cooperation across larger landscape

# Existing co-management initiatives (2)

- Greater Fish River:
  - private sector, communities, Regional Council
  - Cooperation across larger landscape
- Kunene:
  - Conservancies, TAs, Regional Council
  - Contractual park
- Concessions
  - Direct to communities in or neighbouring parks: Kunene; Khaudum GR.

# Why co-management & concessions?

- Motivations for co-management:
  - Threats – residents/neighbours (strategic)
  - Social equity – recognition of claims on land and/or access to resources, cultural associations; HWC etc. (ethical)
  - Problem of Parks as islands (strategic)
  - Contribute to development (political/strategic)

# Why co-management & concessions? (2)

- Motivations for concessions
  - General
    - Addresses social equity issues for residents/neighbours
    - Increases benefits from parks to society/national economy
    - Incentive for communities to support PAs – become real economic “stake – holders”
  - Kunene
    - Foundation for community buy-in, proof of new approach.